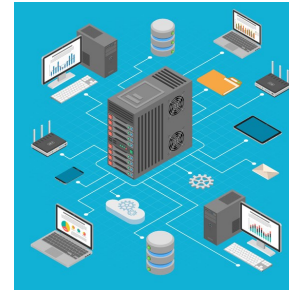


Artificial Intelligence



Curriculum links:

- Design, write and debug programs that accomplish specific goals, including controlling or simulating physical systems; solve problems by decomposing them into smaller parts.
- Use sequence, selection, and repetition in programs; work with variables and various forms of input and output
- Use logical reasoning to explain how some simple algorithms work and to detect and correct

Key Knowledge:

- Understand that data is used to train AI technology.
- Recognise the basics of machine learning and how computers can be trained to perform tasks.
- Understand and use examples of machine learning.
- Understand how to train an AI model.
- Understand big data and how it can be used to inform decision-making.
- Investigate how data can make an AI model more accurate.
- Understand the potential dangers of AI.
- Know who Alan Turing was and how his work impacted AI's success.

Possible programs/ websites:

- iLearn2
- Quick Draw
- Magic Sketchpad
- Semantris Word Association

We should already know:

- Technology is something that helps us.
- Identify examples of technology in the classroom and in the home.
- Use the keyboard to type on the computer.
- Create rules for using technology responsibly .

Key Vocabulary:

Artificial Intelligence	The simulation of human intelligence processes by machines, especially computer systems.
Data	Facts and statistics collected together for reference or analysis.
Firewall	A security system that protects a network by filtering and controlling incoming and outgoing traffic.
LAN	Local Area Network
Machine Learning	A method of data analysis that automates analytical model building.
Pattern	A device that connects different networks and directs data packets to their destination.
Server	A powerful computer that provides services and resources to other devices in the network.
Web browser	A software application used to access and browse the internet.